

Preserving Storm Damaged Trees and Shrubs

Ice storms are highly damaging to landscape plants. Falling trees impact homes, vehicles, power lines and block roads. After a storm, the first priorities are safety and restoring services. The long-term health of trees and shrubs will also depend on the care they are given shortly after the storm. The following steps are recommended:

ASSESS DAMAGE

Have your local Bartlett arborist inspect your landscape after storms. A professional arborist can assist you with making decisions on which trees may be saved and which should be removed. For the trees to be preserved, work can be prioritized to meet your budget.

PRUNING

Saving damaged plants begins with corrective pruning. Even severely damaged trees can usually be pruned to remove hazardous and broken limbs without further damaging the tree. Avoid “topping” trees or excessive pruning that

will further weaken trees. Cabling and bracing will structurally support damaged trees to reduce the possibility of splitting.

FERTILIZATION

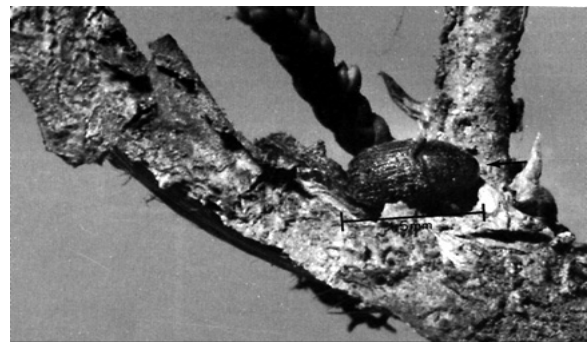
Many soils are deficient in one or more of the nutrients that plants need for recovery. Soil samples should be taken for nutrient analysis. Based on these results, a fertilization program can be implemented which will reduce stress and promote healthy growth.

PEST MANAGEMENT

A program of scheduled inspections is recommended for early detection and treatment of pest problems. Storm damaged plants are particularly susceptible to attacks by insects known as borers. In particular, bronze birch borer, turpentine beetles and cedar bark beetles are tree killers following storms. Weakened and susceptible trees and shrubs need to be treated preventatively before borers attack.



Cedar Bark Beetle gallery



Cedar Bark Beetle